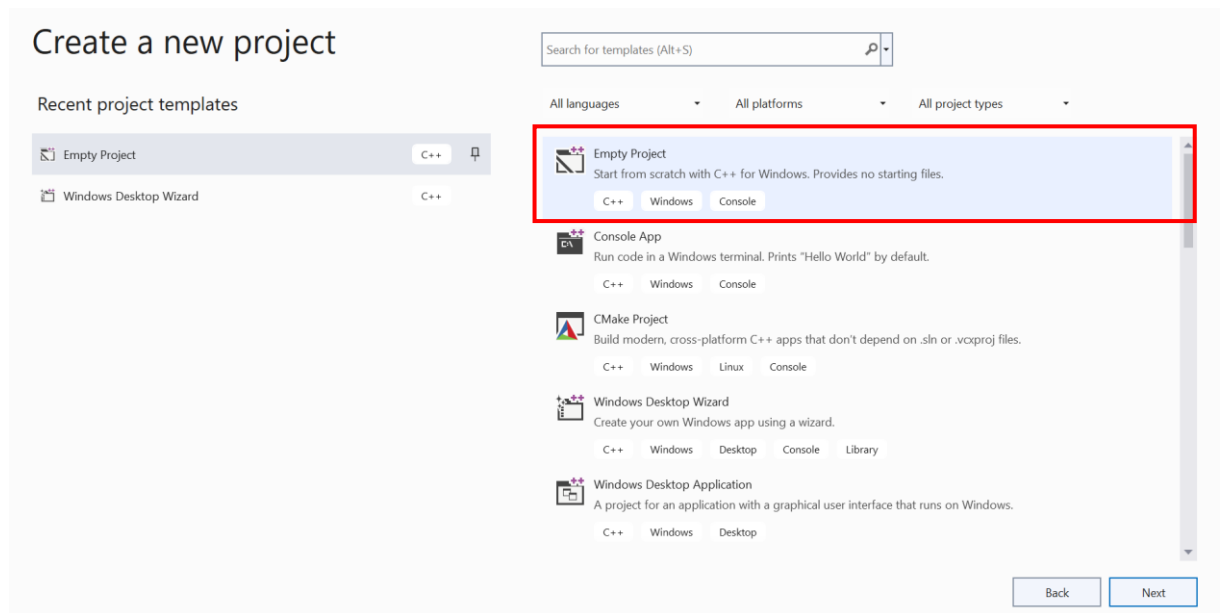


Yeni proje ve dosya açma.



# Configure your new project

Empty Project C++ Windows Console

Project name

yeni\_ders\_projesi

Location

C:\Users\LENOVO\source\repos

Solution name

yeni\_ders\_projesi

Place solution and project in the same directory

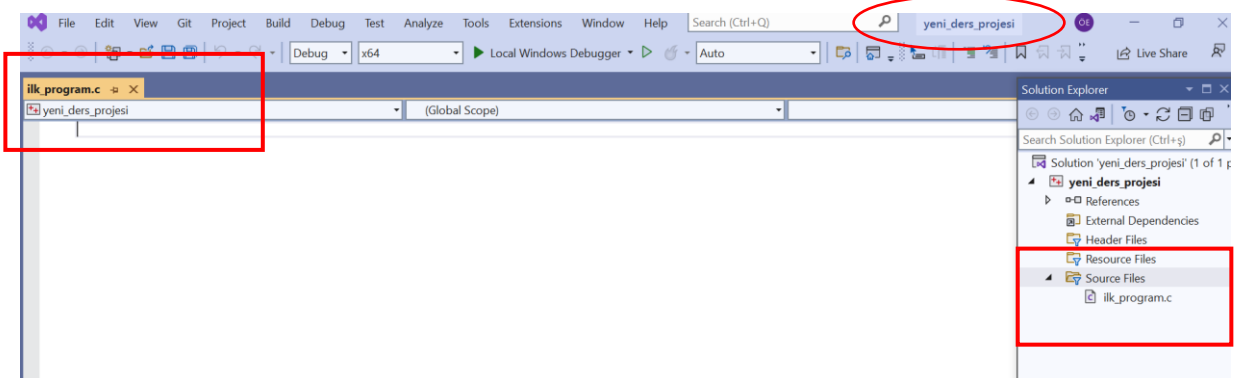
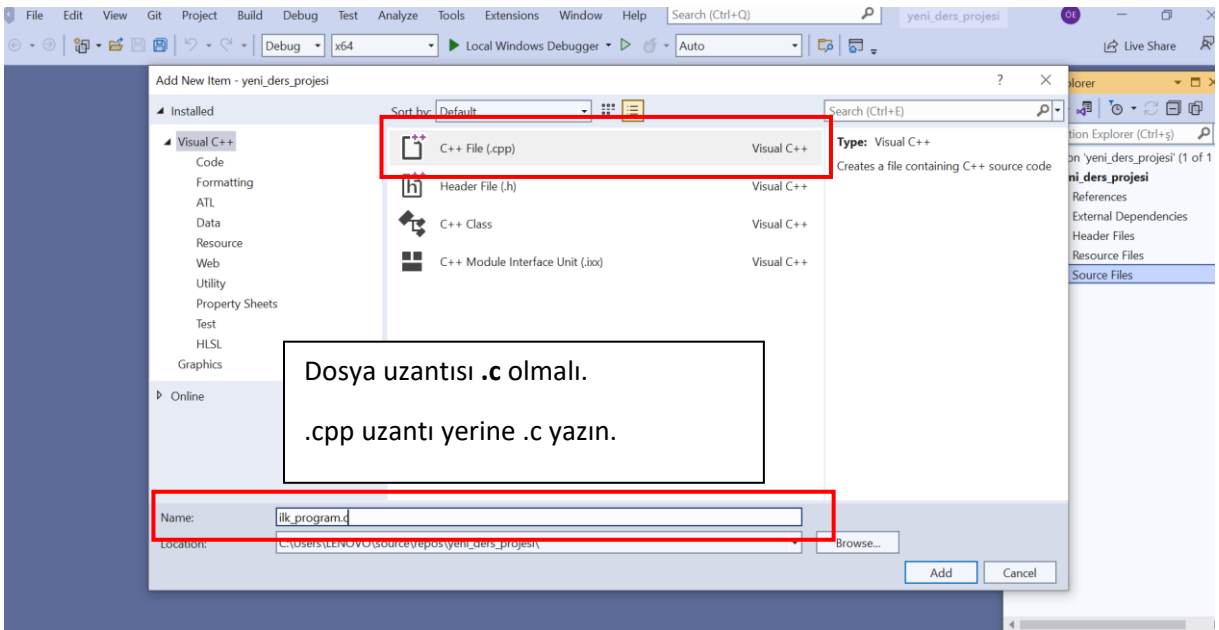
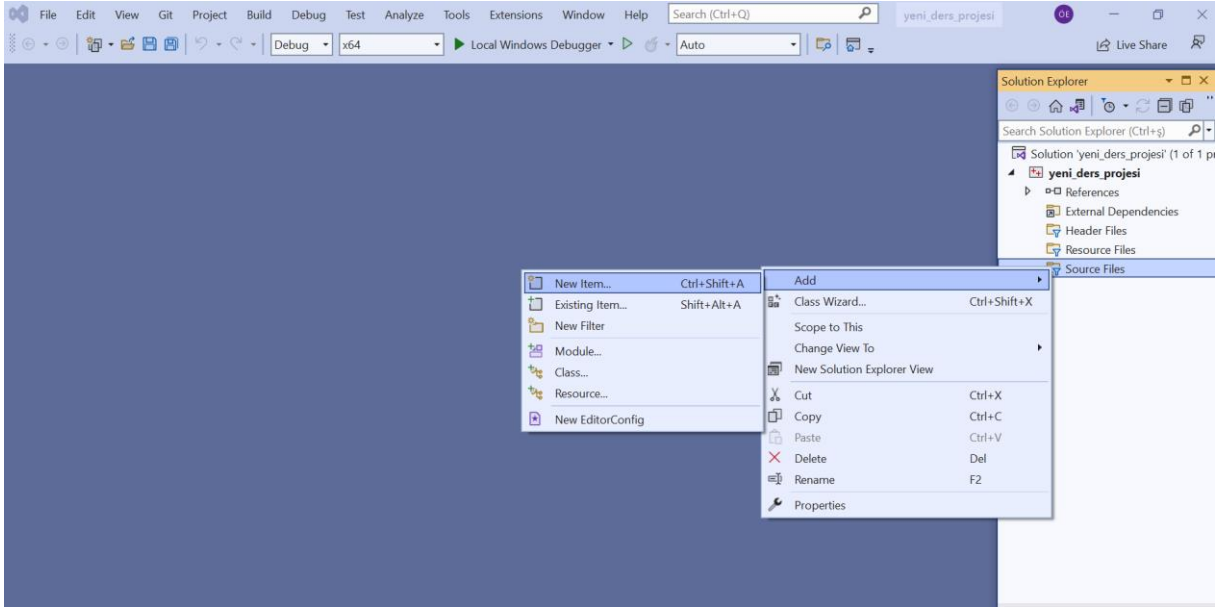
Back

Create

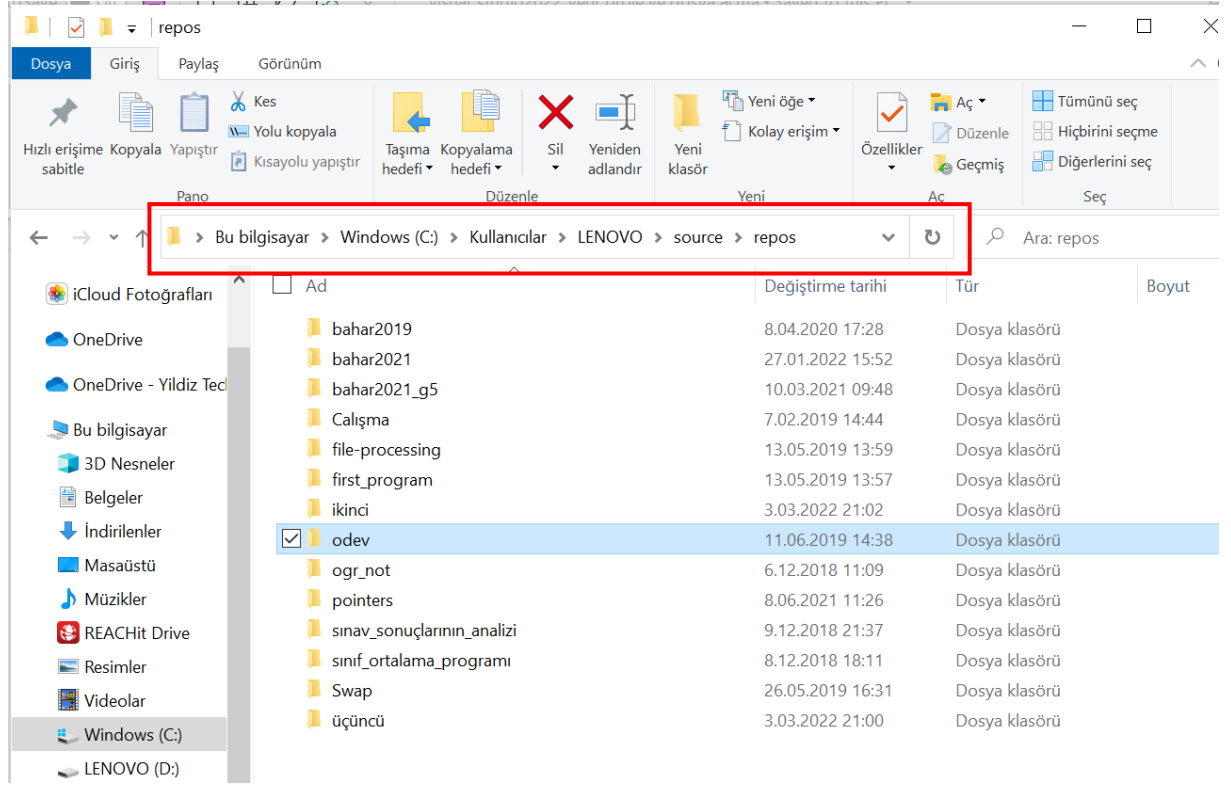
The screenshot shows the Visual Studio interface with the 'View' menu open. The 'Solution Explorer' option is highlighted with a red box. The menu items and their keyboard shortcuts are as follows:

Menu Item	Keyboard Shortcut
Solution Explorer	Ctrl+Alt+L
Git Changes	Ctrl+0, Ctrl+G
Git Repository	Ctrl+0, Ctrl+R
Team Explorer	Ctrl+Ç, Ctrl+M
Test Explorer	Ctrl+E, T
Bookmark Window	Ctrl+K, Ctrl+W
Call Hierarchy	Ctrl+Alt+K
Class View	Ctrl+Shift+C
Code Definition Window	Ctrl+Shift+V
Object Browser	Ctrl+Alt+J
Error List	Ctrl+Ç, E
Output	Alt+2
Resource View	Ctrl+Shift+E
Toolbox	Ctrl+Alt+X
Notifications	Ctrl+Ç, Ctrl+N
Terminal	Ctrl+*
Other Windows	
Toolbars	
Full Screen	Shift+Alt+Enter
All Windows	Shift+Alt+M
Navigate Backward	Ctrl+-
Navigate Forward	Ctrl+Shift+-
Next Task	
Previous Task	
Property Manager	
Property Pages	

Solution explorer ekranda çıkmazsa view menüsünden açabilirsiniz.



Oluşturulan proje ve c dosyalarının bilgisayarınızda kaydedildiği klasör yolunu aşağıda görebilirsiniz.



Projenizi derledikten sonra oluşan .exe dosyasının kaydedildiği klasör yolu

